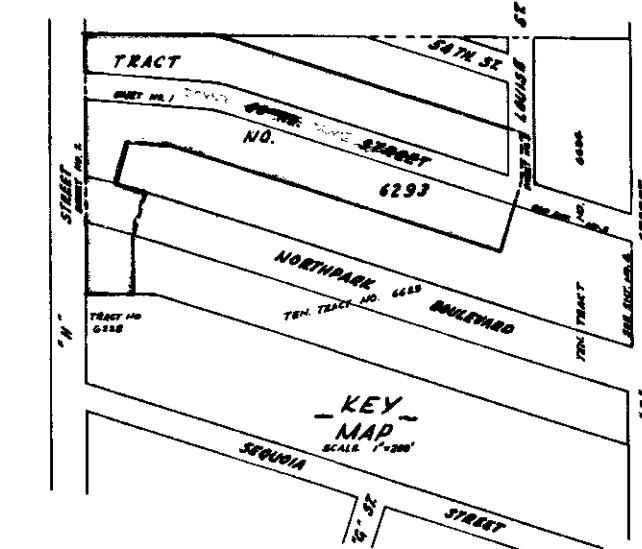
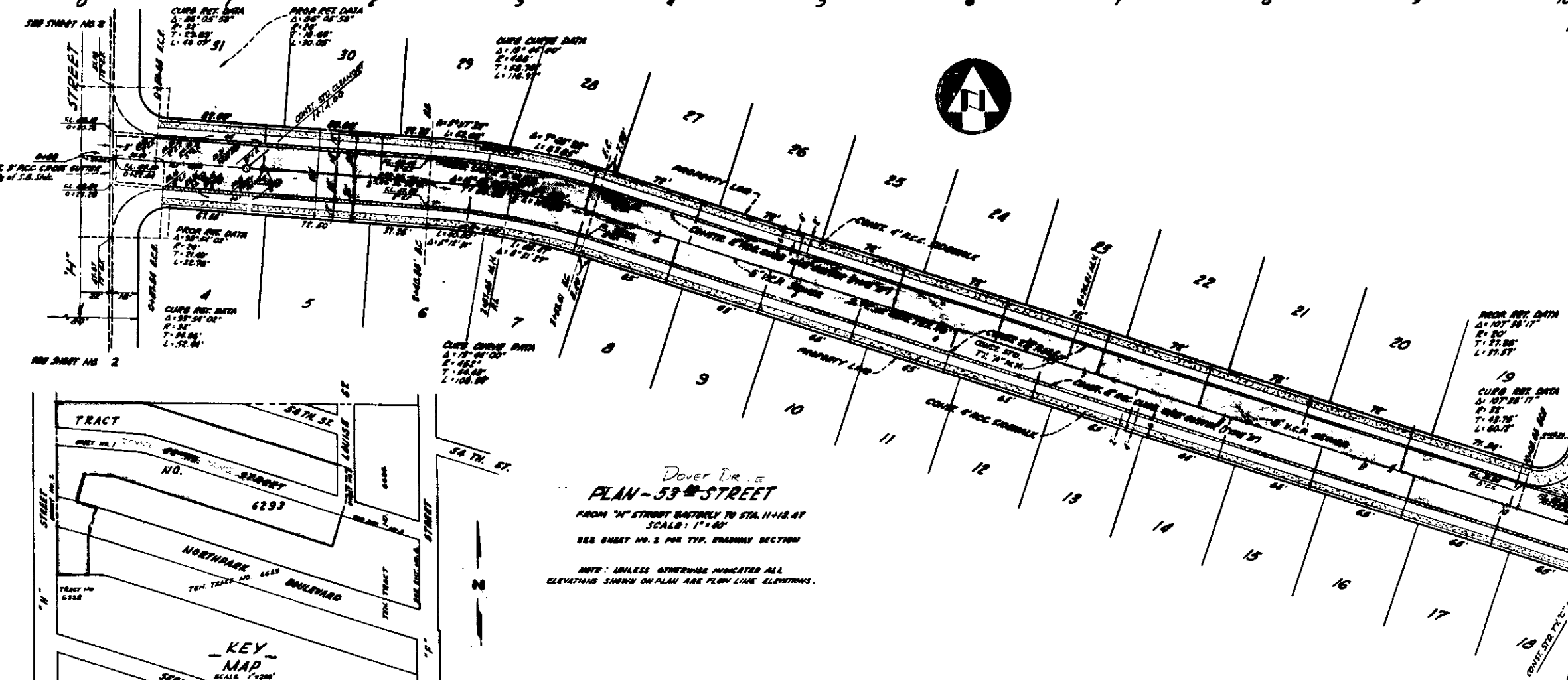


- NOTES:**
- All work shown on these plans shall be done in conformity with applicable provisions of Specifications No. 227 of the City of San Bernardino.
  - 8" x 16" Wyes with connecting sewer to be constructed - shown on plan by a.
  - All Utility City House connections shall be constructed on an upward grade of 2" per foot from Manhole and shall extend from the Manhole to the H.
  - All house connections are approximate and exact locations shall be determined in the field.
  - Manhole frames and covers to be constructed by Sewer Contractor at below official grade shown and upon completion of paving. The Paving Contractor shall adjust manhole frames and covers to said official grade.
  - All Standard Cross Sections of Curb, Gutter and Sidewalk are as per City of San Bernardino, Department of Engineering, Std. Drawings No. 228:145.
  - The existence and location of any underground utility pipes or structures shown on these Plans are obtained by a search of the available records. To the best of our knowledge there are no existing utilities except as shown. The Contractor is required to take due precautionary measures to protect the utility lines shown and any other lines not of record or not shown on these drawings.
  - Sewer laterals to be constructed of either "Wedge-Lock", "Sand-Seal", or "Bond-Seal" clay pipe or asbestos cement pipe. Sewer Manholes shall be constructed of either of the above named clay pipe.
  - Manhole steps shall not be required. Manhole Frames and Covers shall be Alameda County No. A-1150 ("Sight Knight"), as approved 1961.
  - 1" in curb, S.E. Cor. Highfield # 4344, D.L. 1542, S.B. 14. Bench Marks: 2. Top 2" I.P. 2. "N" 2" of N. Line 7: 5220. D.L. 1422, S.B.



TENTATIVE TRACT NO. 6624

TRACT NO. 6293  
 STREET IMPROVEMENT PLAN  
 & SEWER PLAN  
 FROM "N" ST. EASTERLY TO STA. 11+18.87

PREPARED IN THE OFFICE OF  
 JOSEPH E. BONADIMAN & ASSOC.  
 JOSEPH E. BONADIMAN, P.E. REG. 5294

APR 23 1966

2946

NO.	DESCRIPTION	DATE	APPROVED
1	REMOVED SEWER H.C. LOT 8	10-3-62	[Signature]